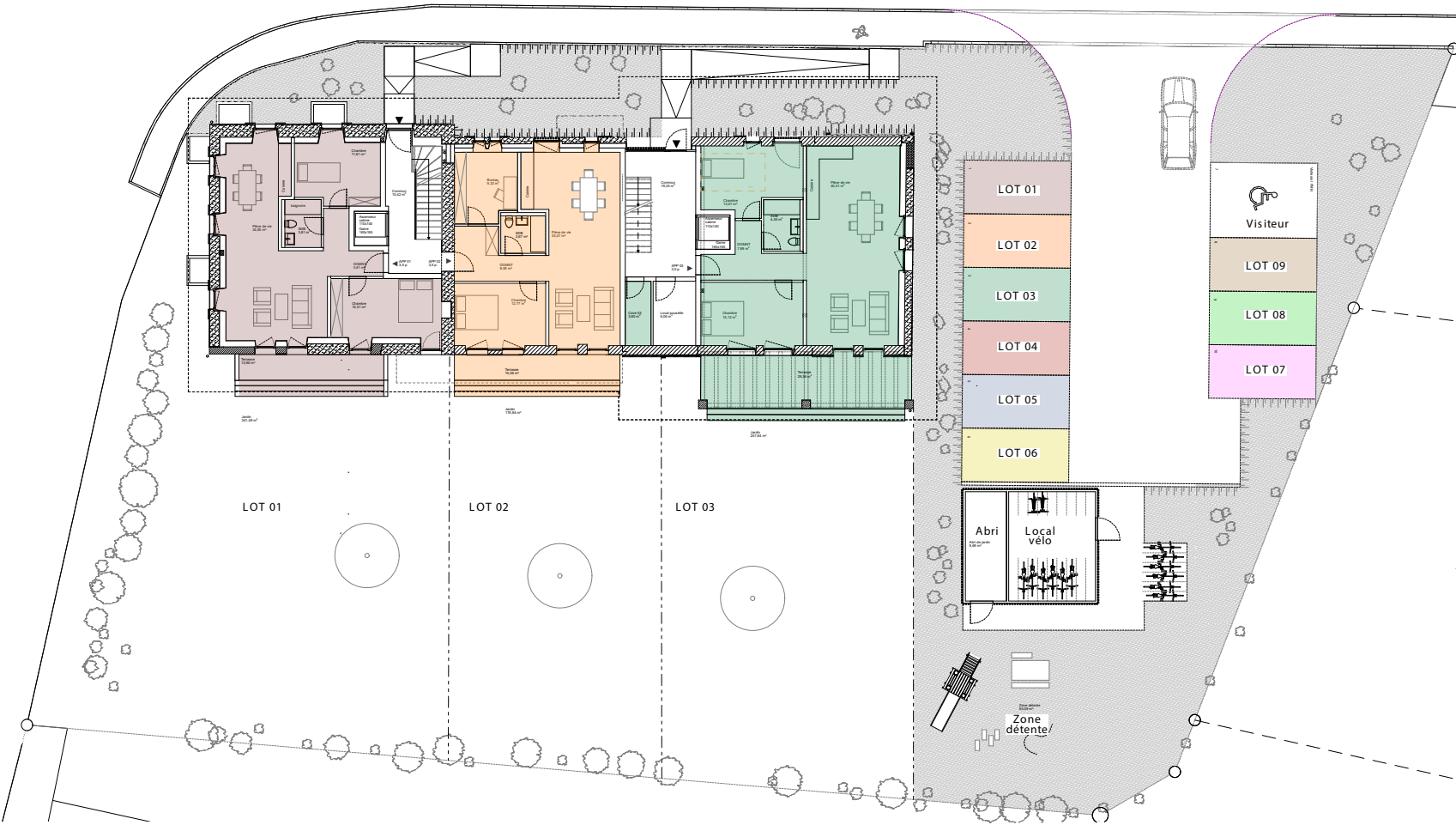




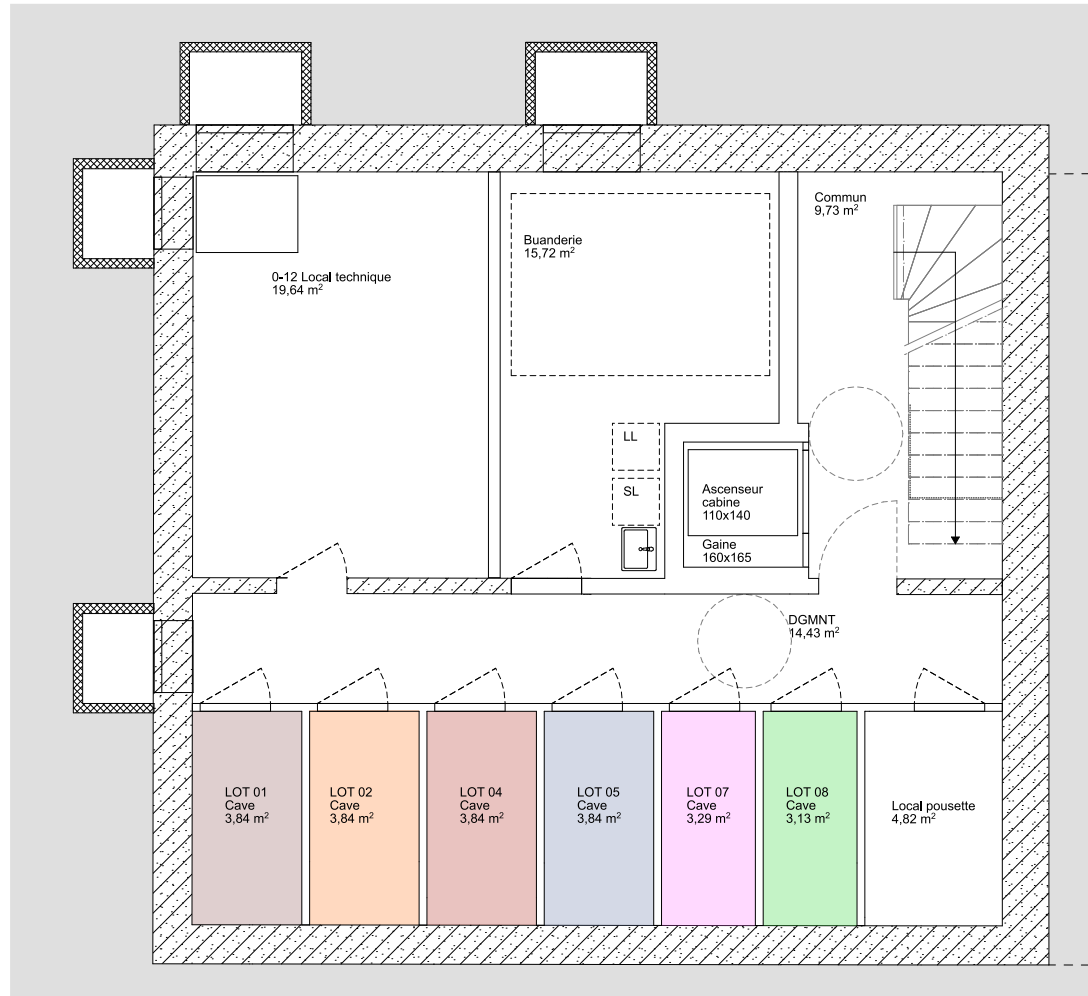
DOMPIERRE Centre



PLAN DE SITUATION



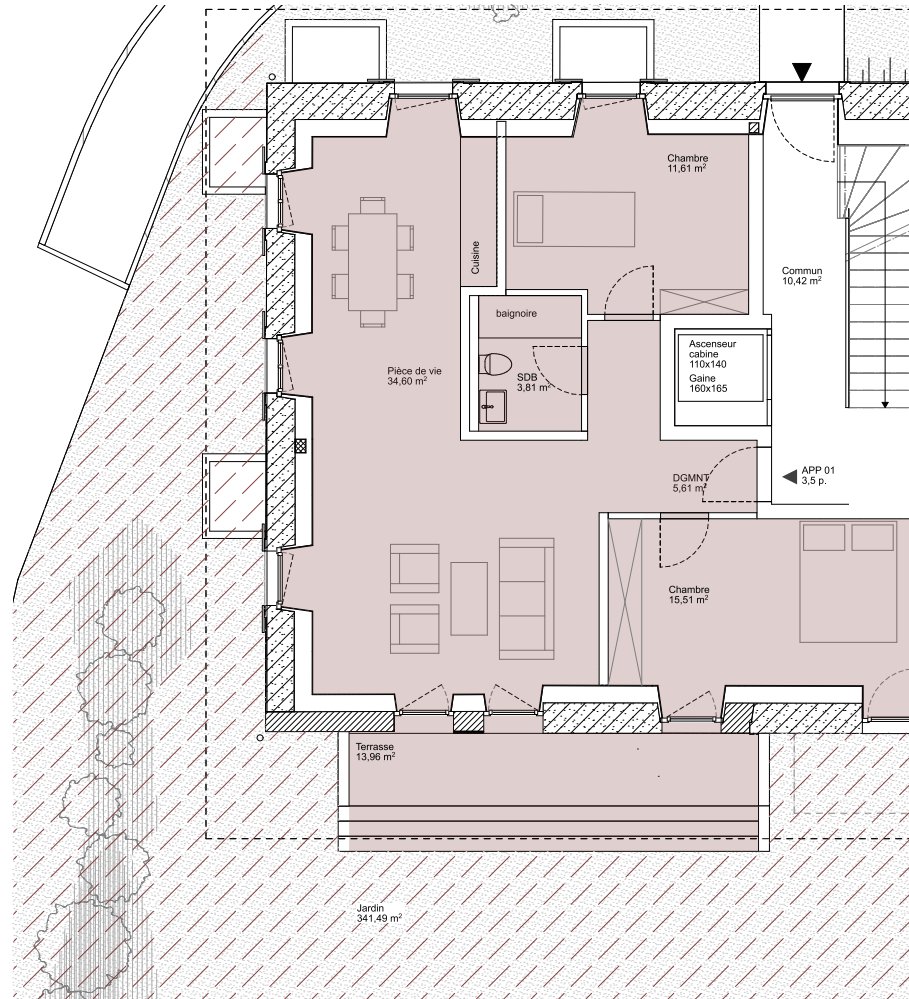
DOMPIERRE
Centre



SOUS - SOL



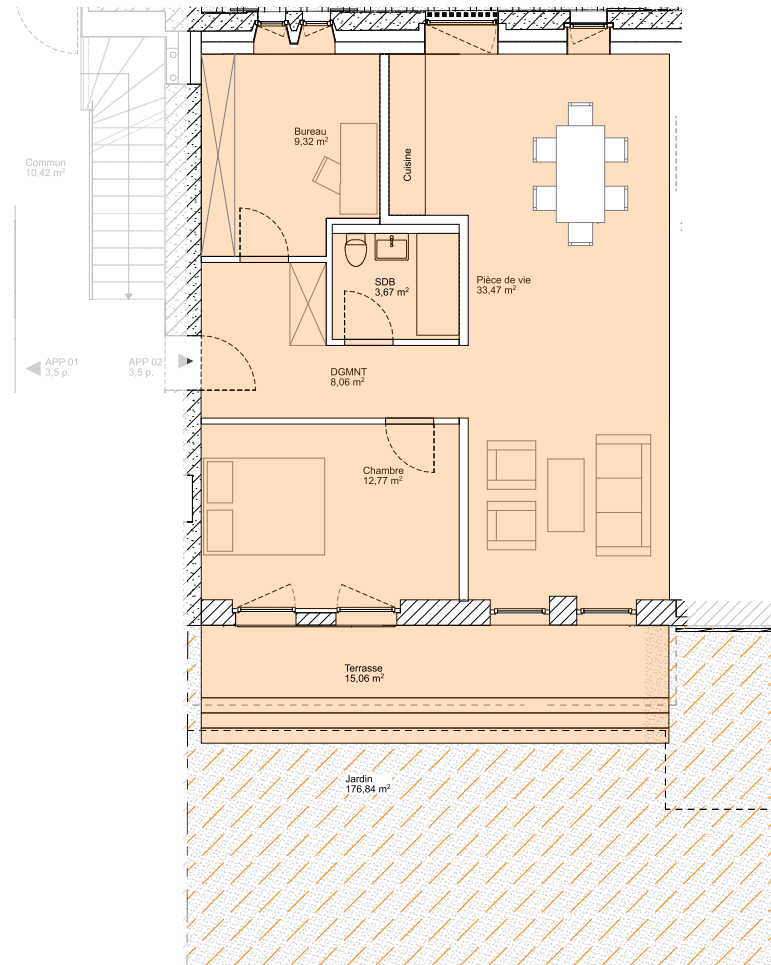
DOMPIERRE
Centre



Lot	Etage	Nb de pièces	Orientation	Surface habitable	Surface terrasse	Surface jardin	Surface de vente
01	RDC	3.5	S-O	731 m ²	13.96 m ²	341.49 m ²	80.08 m ²



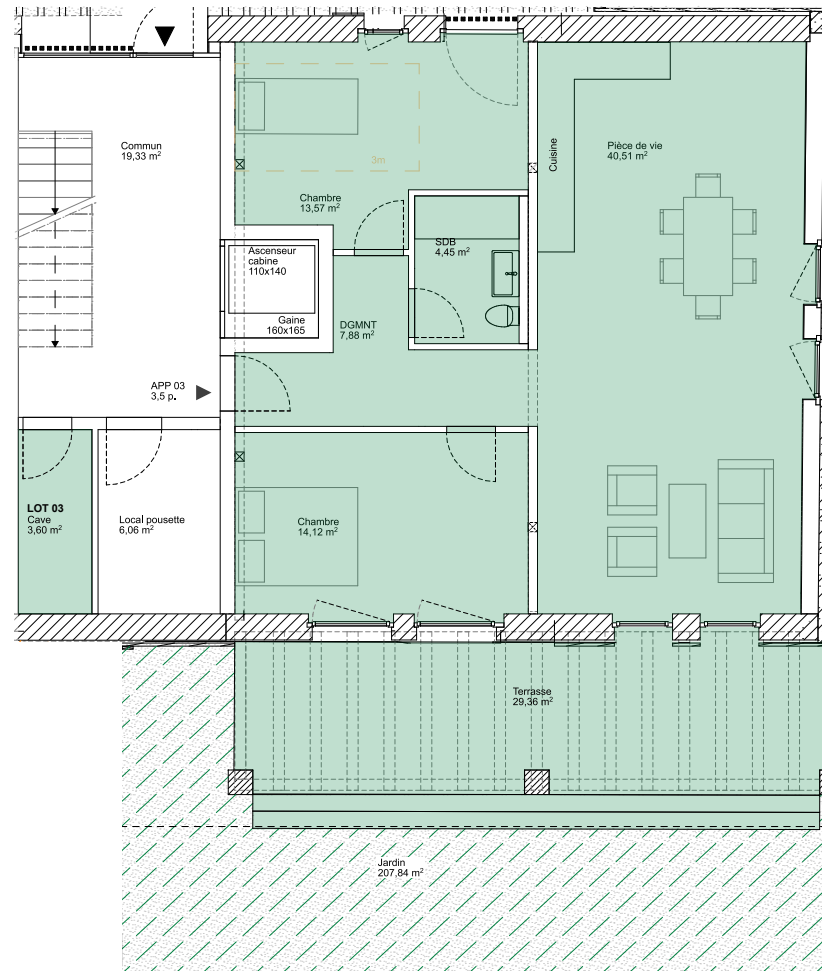
DOMPIERRE
Centre



Lot	Etage	Nb de pièces	Orientation	Surface habitable	Surface terrasse	Surface jardin	Surface de vente
02	RDC	3	S	69.33 m ²	15.06 m ²	176.84 m ²	76.86 m ²



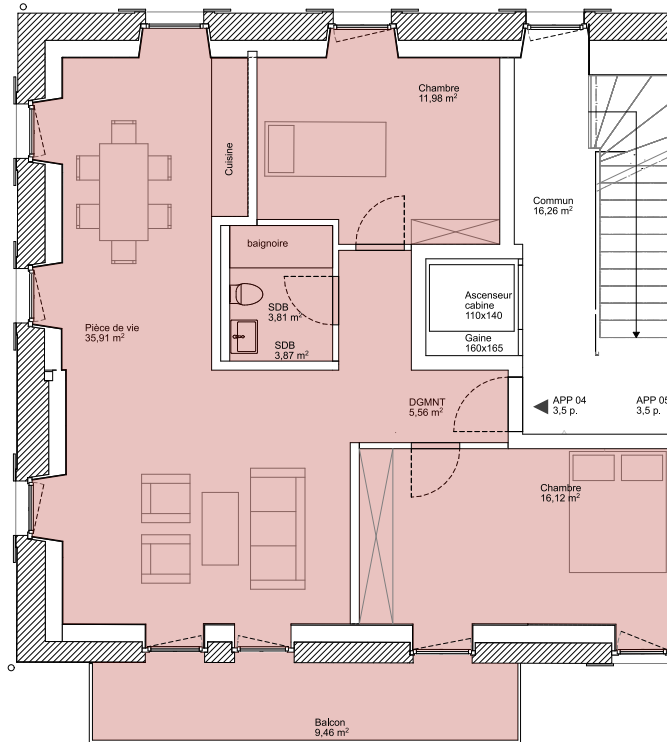
DOMPIERRE
Centre



Lot	Etage	Nb de pièces	Orientation	Surface habitable	Surface terrasse	Surface jardin	Surface de vente
03	RDC	3.5	S-E	81.75 m ²	29.36 m ²	207.84 m ²	91.54 m ²



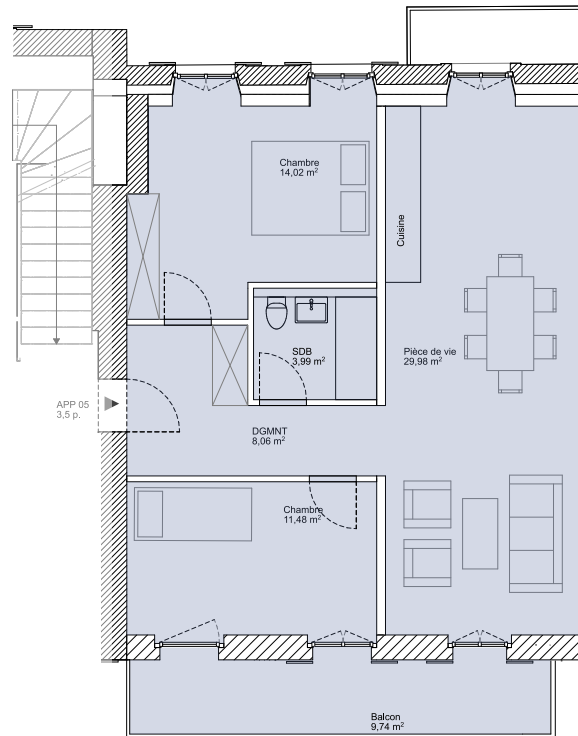
DOMPIERRE
Centre



Lot	Etage	Nb de pièces	Orientation	Surface habitable	Surface balcon	Surface de vente
04	1°	3.5	S-O	74.87 m ²	9.46 m ²	79.6 m ²



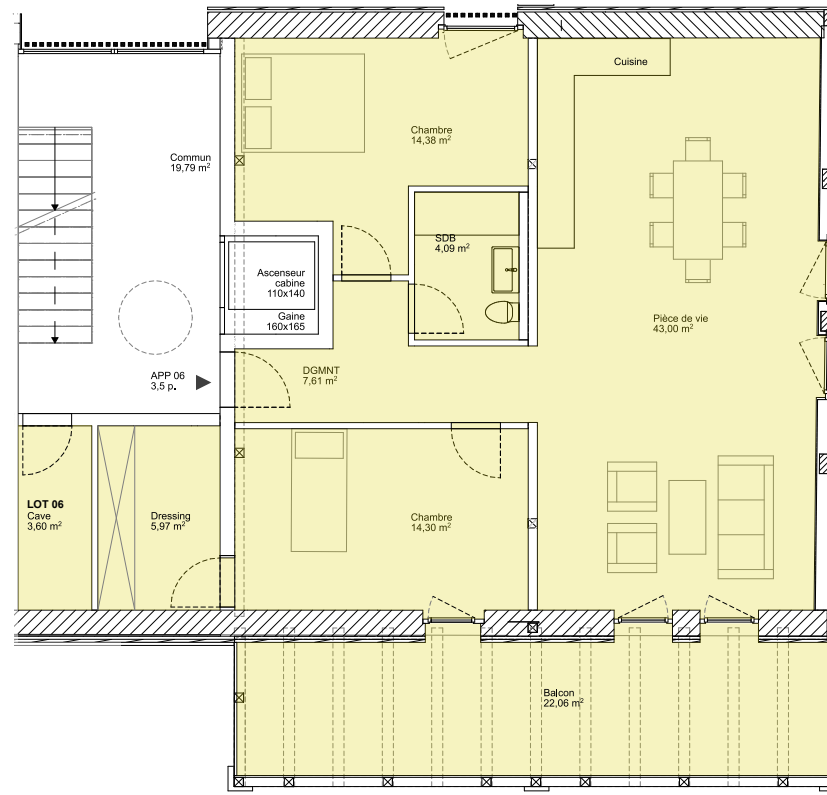
DOMPIERRE
Centre



Lot	Etage	Nb de pièces	Orientation	Surface habitable	Surface balcon	Surface de vente
05	1 ^e	3.5	S	69.07 m ²	9.74 m ²	73.94 m ²



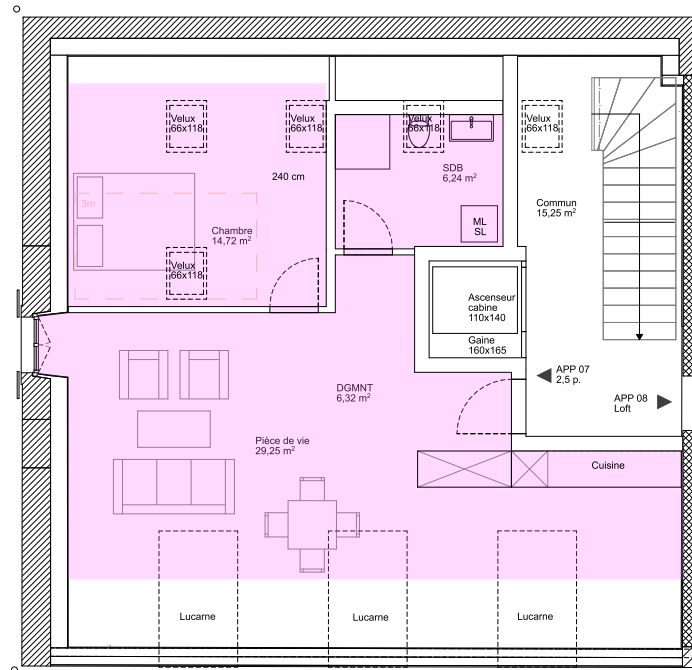
DOMPIERRE
Centre



Lot	Etage	Nb de pièces	Orientation	Surface habitable	Surface balcon	Surface de vente
06	1°	3.5	S-E	89.35 m ²	22.06 m ²	100.38 m ²



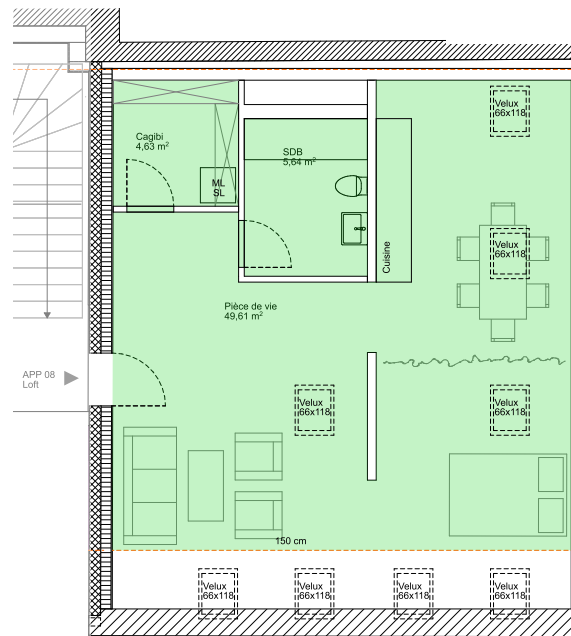
DOMPIERRE
Centre



Lot	Etage	Nb de pièces	Orientation	Surface habitable	Surface de vente
07	2°	2.5	S-O	60.47 m ²	60.47 m ²



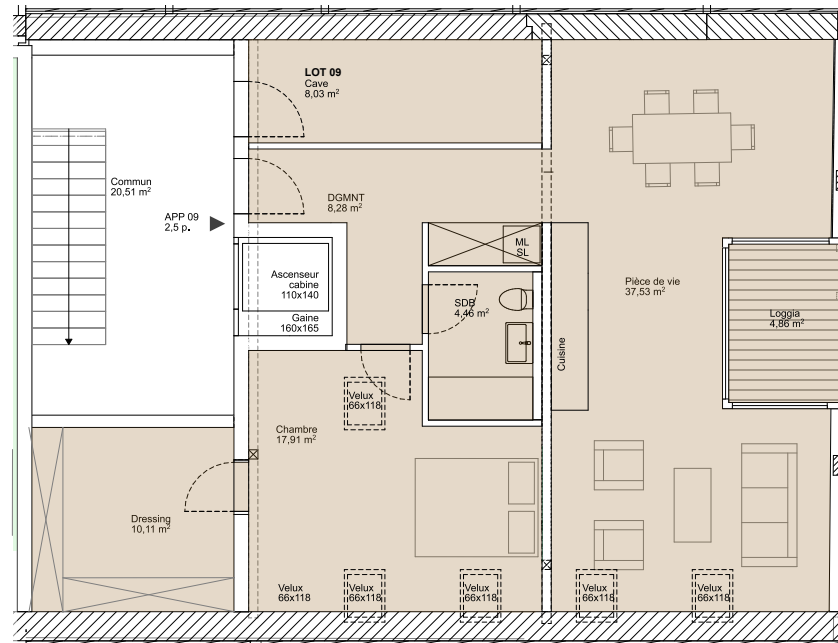
DOMPIERRE
Centre



Lot	Etage	Nb de pièces	Orientation	Surface habitable	Surface de vente
08	2°	Loft	S	69.07 m ²	69.07 m ²



DOMPIERRE
Centre



Lot	Etage	Nb de pièces	Orientation	Surface habitable	Surface loggia	Surface de vente
09	2°	2.5	S-E	79.43 m ²	4.86 m ²	81.86 m ²